



CRENELLE

SPRUSON STREET | NEUTRAL BAY



Discovery Guide

FOR NEUTRAL BAY AND SURROUNDS



Uncover your enclave

In every direction, the Lower North Shore is a place of discovery. From cosmopolitan Kirribilli to verdant Neutral Bay, these walkable harbour villages are coveted for their exuberant lifestyle, plentiful amenities, and proximity to the Sydney CBD.

And at 22-26 Spruson Street, in the hidden heart of Neutral Bay, is Crenelle. Brought to you by Made Property, each one of these 11 residential retreats designed by SJB Architects feel like a proud family home. Their generous sense of space – capturing natural light and views of the North Sydney skyline – exudes an enduring warmth, comfort, and harmony synonymous with Neutral Bay.

This discovery guide illustrates the compelling convenience of life at Crenelle: adjacent to a city-bound bus route and surrounded by the unique treasures of Neutral Bay and Kirribilli.

Harbour Parks & Recreation

The Lower North Shore is renowned for its natural beauty; the leafy streetscapes and fresh-air reserves that overlook Sydney Harbour. For those who seek rejuvenation or relaxation in the outdoors, this is your playground.

Forsyth Park & Community Garden	4 MIN WALK
Sea Base Platypus	14 MIN WALK
Kurraba Reserve	18 MIN WALK
Cammeray Tennis Club	19 MIN WALK
Bradfield Park Heritage Walk	20 MIN WALK
The Greens North Sydney	20 MIN WALK
Cammeray Golf Club	23 MIN WALK
Maccallum Seawater Pool	24 MIN WALK

Anderson Park

6 MIN WALK



Bounded by grand fig trees and the harbour foreshore, this park was first dedicated to the public in 1898. Since then, it has become a major sporting and recreation venue for North Sydney; with a multi-use sports field, walkways, and plenty of picnicking spots.



Hayes Street Beach

8 MIN WALK

Blink and you'll miss the tunnel path that leads to one of the Lower North Shore's only beaches and a local favourite. Tucked away behind a row of residential buildings, what this shady stretch of sand lacks in length, it makes up for in secluded serenity.

The Neutral Bay Club

14 MIN WALK



Nestled within residential Neutral Bay, this 140-year-old sports club and family bistro provides its members day-and-night access to tennis courts and a bowling green, for both social and competitive recreation.

North Sydney Olympic Pool

22 MIN WALK



With its iconic views of the Harbour Bridge, this is one of Sydney's most recognisable pools. In late 2022, the historic pool will reopen after a two-year, \$63.9 million-dollar upgrade that includes a new fitness centre, warm water pool, and gelato bar.



Milson Park

12 MIN WALK

This Kirribilli foreshore park is best known for 'Jacaranda Street': the late springtime spectacle when its grove of interwoven jacaranda trees come into full bloom. Formally landscaped, it also showcases heritage plantings of mature palm trees and traditional play equipment.

Vintage Cellars

4 MIN WALK



Woolworths Neutral Bay	5 MIN DRIVE
Greenwood Plaza	5 MIN DRIVE
Neutral Bay Post Office	15 MIN WALK
Commonwealth Bank	20 MIN WALK
Royal North Shore Hospital	5 MIN DRIVE
Community Moves Health & Fitness	15 MIN DRIVE
Yoga Moment Neutral Bay	8 MIN WALK
Eyecare Plus Optometrists	16 MIN WALK
Shore Dental	18 MIN WALK
La Diosa Massage and Natural Health	15 MIN WALK

Flowers at Kirribilli

18 MIN WALK



Open seven days a week with market-fresh flowers, this award-winning florist supplies stunning bouquets to homes and weddings across the North Shore.

Shopping & Services

Replenishing your pantry is easy north of the bridge. Head to Kirribilli's Broughton Street or the Neutral Bay town centre for the essentials, or North Sydney for a more glamorous – yet still convenient – retail experience.

Food & Drink

If its wealth of eateries is anything to go by, the Lower North Shore has a big appetite.

Clustered around Military Road, Young and Grosvenor Streets, the Neutral Bay Village dining precinct presents hip cafés and cocktail bars alongside Sydney's best Japanese. While a ten-minute walk from Crenelle, Kirribilli is a foodie hub that can satisfy any craving.

The Flying Bear

15 MIN WALK



This café on the wharf of the Sydney Flying Squadron in Kirribilli is all about laidback weekend breakfasts with postcard-perfect harbour views.

Kirribilli Hotel

16 MIN WALK



Located moments from Milsons Point station, this lively hotel delivers a classic pub experience to their discerning Lower North Shore patrons.

Home by Cornhill Coffee

16 MIN WALK



One of Neutral Bay's newest cafés brings a CBD-style brunch degustation to the North Shore – with plans to open in the evenings for dinner and drinks.

Enoteca 128

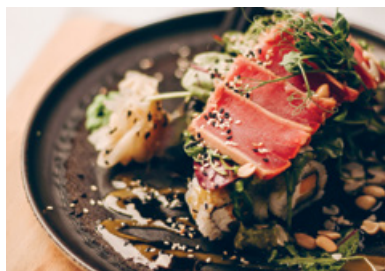
17 MIN WALK



Authentically Italian in both cuisine and attitude, this Grosvenor Lane restaurant has the locals raving about its extensive wine list and exceptional service.

Restaurant 16

19 MIN WALK



Enigmatic in name yet welcoming in atmosphere, this imaginative Italian-meets-Japanese restaurant has been a local secret since 2011.

The Oaks

16 MIN WALK



Established in 1885, this institution of Neutral Bay is so much more than the famous oak tree in its beer garden. The Oaks has upgraded with the times, recently opening Alala's Bar and garden conservatory restaurant, and a takeaway charcoal chicken shop.

The Grumpy Baker 9 MIN WALK

Limelight Café & Restaurant 9 MIN WALK

Thelma & Louise 9 MIN WALK

Thai Fusion Kirribilli 17 MIN WALK

Henry's Neutral Bay 18 MIN WALK

Kyushu Japanese Restaurant 18 MIN WALK

Bourke Street Bakery 18 MIN WALK

Kirribilli Seafoods 18 MIN WALK

Bay Coffee 19 MIN WALK

Jugemu & Shimbashi 19 MIN WALK

Loulou Bistro 23 MIN WALK

Twilight Food Fair 25 MIN WALK

Arts, Culture & Entertainment

With such an inspiring landscape, it's no wonder that the Lower North Shore has been home to some of Australia's most beloved artists.

Over the decades, this cultural heritage has been further enriched by a modern array of artistic and entertainment pursuits.

Across the harbour at Circular Quay, the Sydney Opera House and its many attractions are only one hour on foot from Crenelle. Enjoy an evening stroll across the Sydney Harbour Bridge for dinner and a show, before catching a quick ferry back to Neutral Bay.

If Sydney Olympic Park's roaring crowds and sporting triumphs are a more enticing outing, the stadium is a half-hour drive from Crenelle or a one-hour trip from Milsons Point railway station.

Kirribilli Markets

19 MIN WALK



This highly popular bi-monthly market is known across wider Sydney for its picturesque location just below the Sydney Harbour Bridge. Featuring over 200 stalls encompassing fashion, jewellery, plants, homewares, gifts and gourmet food, there's no risk of ever returning home empty-handed.



Ensemble Theatre

15 MIN WALK

Situated on the Kirribilli waterfront, the Ensemble is the longest continuously running professional theatre in Australia. This cosy theatre prides itself on performing the best local and international plays, as well as fostering new works.

Hayden Orpheum Picture Palace

6 MIN DRIVE



There's more to this celebrated multiplex beyond its heritage listed Art Deco architecture. A personal favourite venue of the film critic David Stratton, its 1987 restoration added more cinemas and a 1925 Wurlitzer pipe-organ played at special screenings.

May Gibbs' Nutcote

12 MIN WALK



The home of children's author and illustrator May Gibbs from 1925 to 1969, the heritage listed Nutcote brings to life Gibbs' home and studio as it would have looked back then. Its characterful architecture, tearoom and cottage gardens charm visitors of all ages.



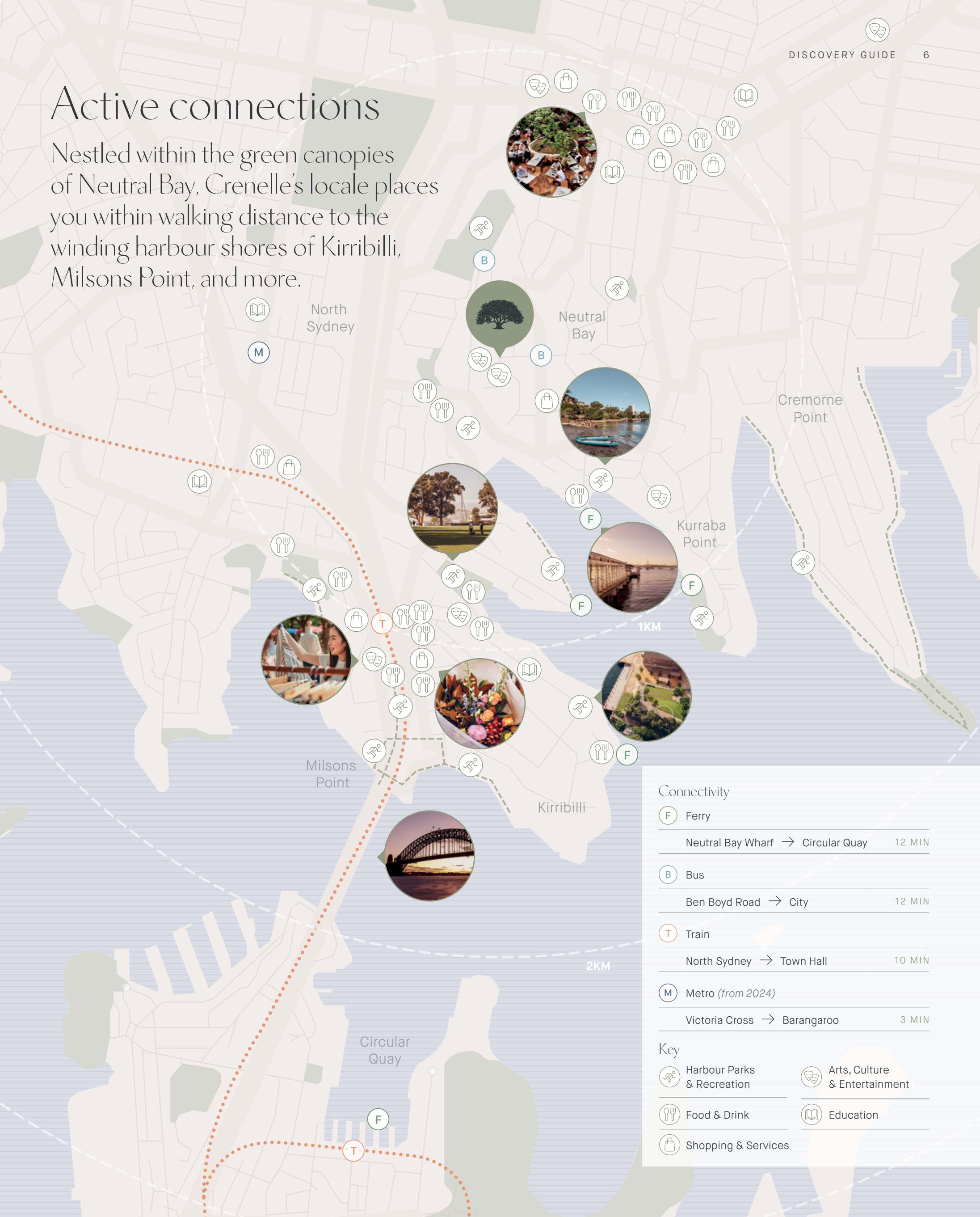
Traffic Jam Galleries

16 MIN WALK

At one of Military Road's most prominent intersections stands one of Sydney's most dynamic gallery spaces. Traffic Jam specialises in a rotating roster of contemporary art exhibitions from emerging and established artists alike.

Active connections

Nestled within the green canopies of Neutral Bay, Crenelle's locale places you within walking distance to the winding harbour shores of Kirribilli, Milsons Point, and more.



Connectivity

F Ferry	Neutral Bay Wharf → Circular Quay	12 MIN
B Bus	Ben Boyd Road → City	12 MIN
T Train	North Sydney → Town Hall	10 MIN
M Metro (from 2024)	Victoria Cross → Barangaroo	3 MIN

Key

- Harbour Parks & Recreation
- Food & Drink
- Shopping & Services
- Arts, Culture & Entertainment
- Education



CRENELLENEUTRALBAY.COM.AU

1800 531 733